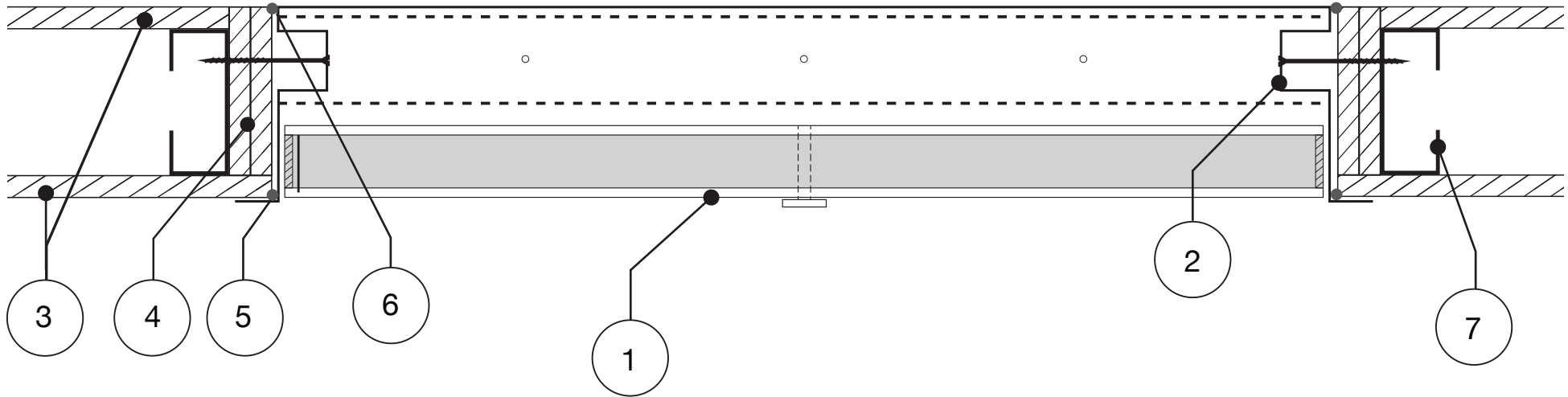


# FIRE RATED WALL HATCHES (2-WAY TESTED) INSTALLATION GUIDELINE



- 
1. Fire Door
  2. Steel Hatch Frame
  3. One layer 13mm Fire Rated Plasterboard each side
  4. Two layers 13mm Fire Rated Plasterboard between Steel Stud and Hatch Frame
  5. Sealant Bead - on inside plaster edge, then hatch fitted (Gib Fire Sound Seal)
  6. Sealant Bead - around joint, smoothed off to finish (Gib Fire Sound Seal)
  7. Steel Stud
- 

## Installation Instructions

1. Mark out and cut out an area in the wall to suit the dimensions of the access panel. Please note the cut-out size is 10mm greater than the access panel (eg. 600 x 600mm, cut out size 610 x 610mm).
2. Place into position, screw through the fixing holes in the frame into the steel stud, as per the above diagram.

Note: Unihatch Fire Rated Access Panels require 2 layers 13mm Fire Rated Plasterboard lining beside the hatch frame, and steel stud, as per note 5/6. The above diagram is not to scale.



**UNIHATCH**