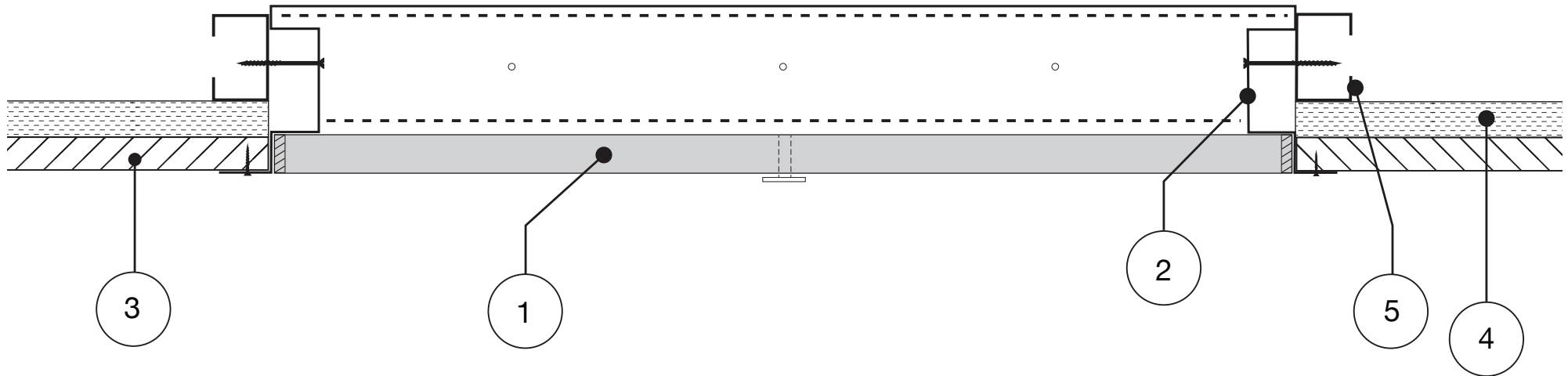


UNIATCH

INSTALLATION GUIDELINE



-
1. Door
 2. Steel Hatch Frame
 3. 13mm Plasterboard
 4. Steel Furring Channel
 5. Steel Stud/Timber or Proprietary Strong Back
-

Installation Instructions

1. Mark out and cut out an area in the ceiling to suit the dimensions of the access panel. Please note the cut-out size is 5-10mm greater than the access panel (eg.600 x 600, cut out size 610 x 610).
2. Place into position, screw through the fixing holes in the frame into the steel stud or timber, as per the above diagram.



UNIATCH